

**LAND FOR SALE**  
Slaughter Road  
Huntsville, Alabama



**Slaughter Road Huntsville, AL**  
Prime location for town home development

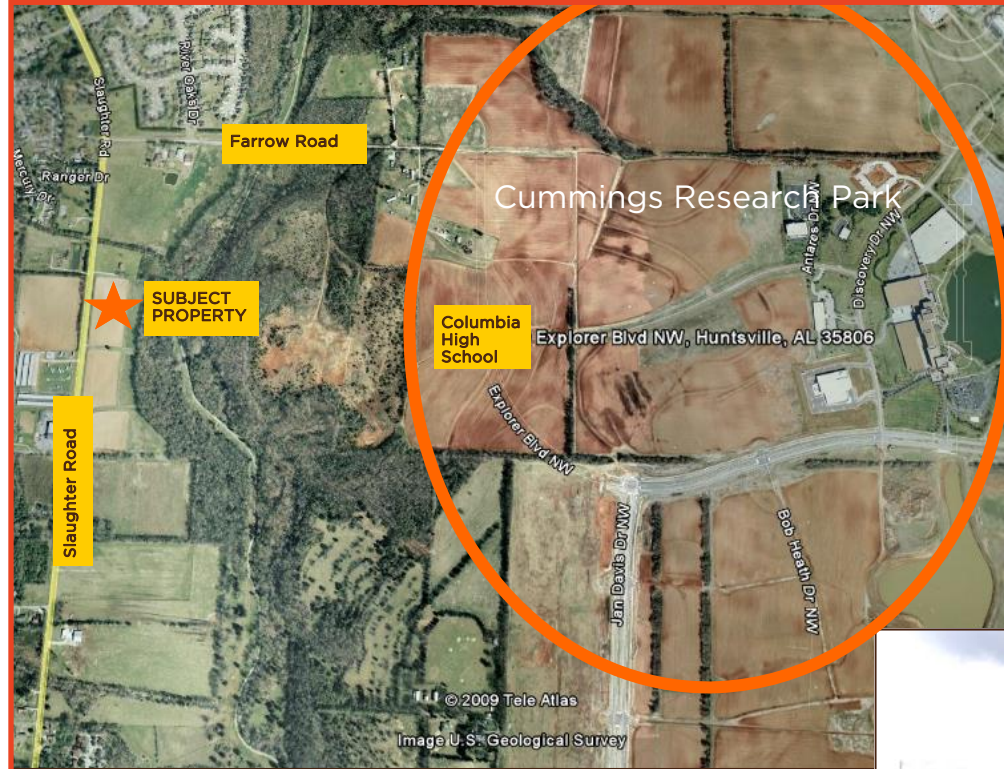
**AVAILABLE**



**NITNEIL PARTNERS**

[www.nitneilpartners.com](http://www.nitneilpartners.com)

**678.701.9305**



**COMMENTS**

- 342' frontage on Slaughter Road
- Zoned R-2A, and approved for a townhome subdivision
- Preliminary engineering work has been completed
- Very close proximity to Cummings Research Park and newly built Columbia High School
- Perfectly suited for town home development

**AVAILABLE ACREAGE** 5.30 acres

**DEMOGRAPHICS**

*5 mile radius*

Population

84,460

**SALES PRICE**

\$500,000  
(\$2,17 PSF)

Ave. HH Income

\$70,800

**NITNEIL PARTNERS** 1447 Peachtree Street, Suite 470 Atlanta, GA 30309

office. 678.701.9305 | fax. 404.601.6777 | contact. Neil Sapa | [neil@nitneilpartners.com](mailto:neil@nitneilpartners.com) | [www.nitneilpartners.com](http://www.nitneilpartners.com)



