



LAND FOR SALE - HUGHES ROAD, MADISON, AL
PRIME LOCATION FOR MEDICAL OR BANK USE



AVAILABLE ACREAGE

1.45 acres

COMMENTS

- Located along Hughes Road between Madison Blvd & Mill Rd
- Parcel is adjacent to RBC Bank
- 210' frontage along Hughes Road
- Zoned B-3 (Suitable for retail, office or mixed use)
- All utilities available

SALES PRICE

\$500,000 (\$7.92 PSF)

DEMOGRAPHICS

5 MILE RADIUS

Population: 52,800
 Avg HH Income: \$78,300

Avg Daily Traffic Count ► 50,000 cars/day
 (Hughes Road & Hwy 72 West)

Avg Daily Traffic Count ► 26,000 cars/day
 (Hughes Road & Madison Boulevard)



Exclusive Agents: David Garnett
 davidg@grahamcompany.com

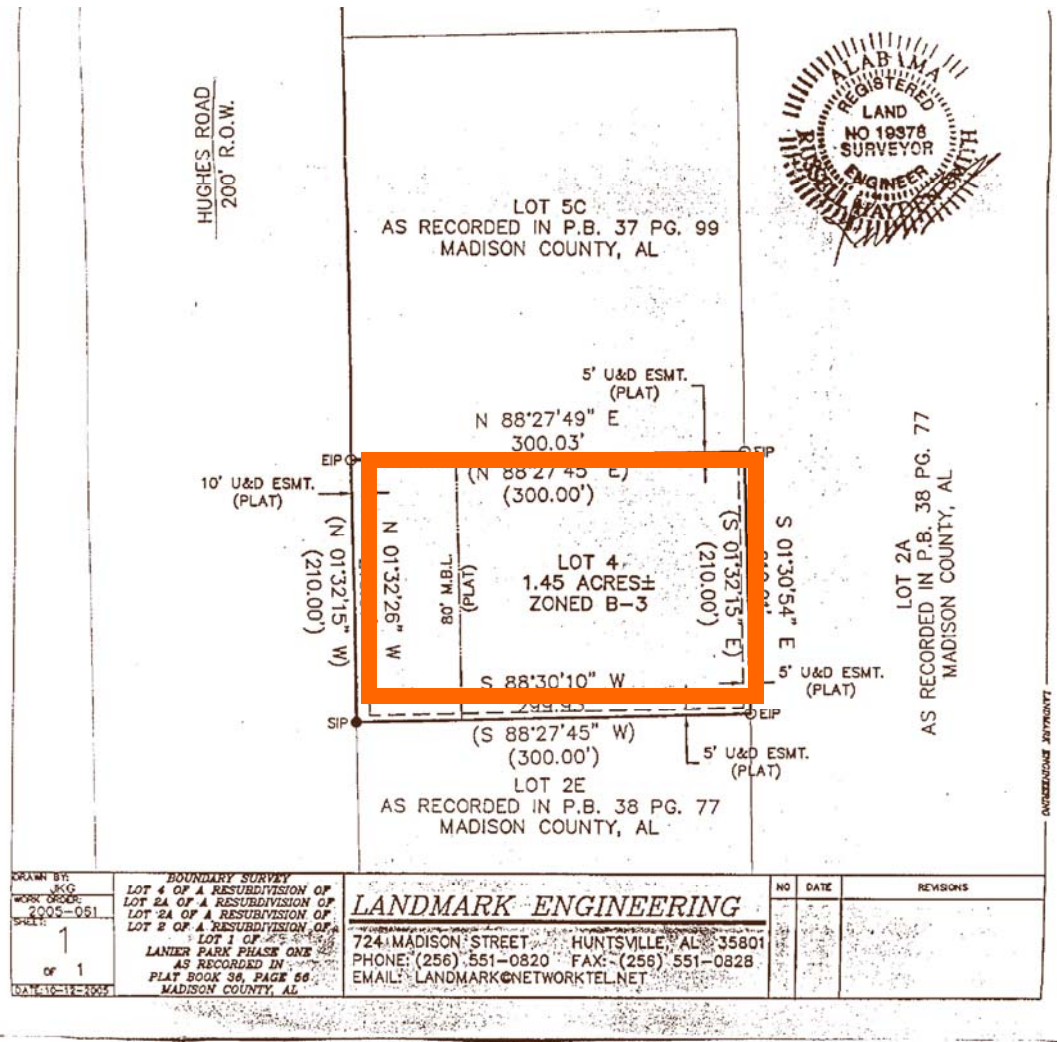
Jeremy D. Pope, CCIM, SIOR
 jeremyp@grahamcompany.com

200 Westside Square
 Suite 800
 Huntsville, AL 35801

Phone: 256.382.9010
 Fax: 256.382.9011
 www.grahamcompany.com



LAND FOR SALE - HUGHES ROAD, MADISON, AL



Exclusive Agents: David Garnett
davidg@grahamcompany.com

Jeremy D. Pope, CCIM, SIOR
jeremyp@grahamcompany.com

200 Westside Square
Suite 800
Huntsville, AL 35801

Phone: 256.382.9010
Fax: 256.382.9011
www.grahamcompany.com