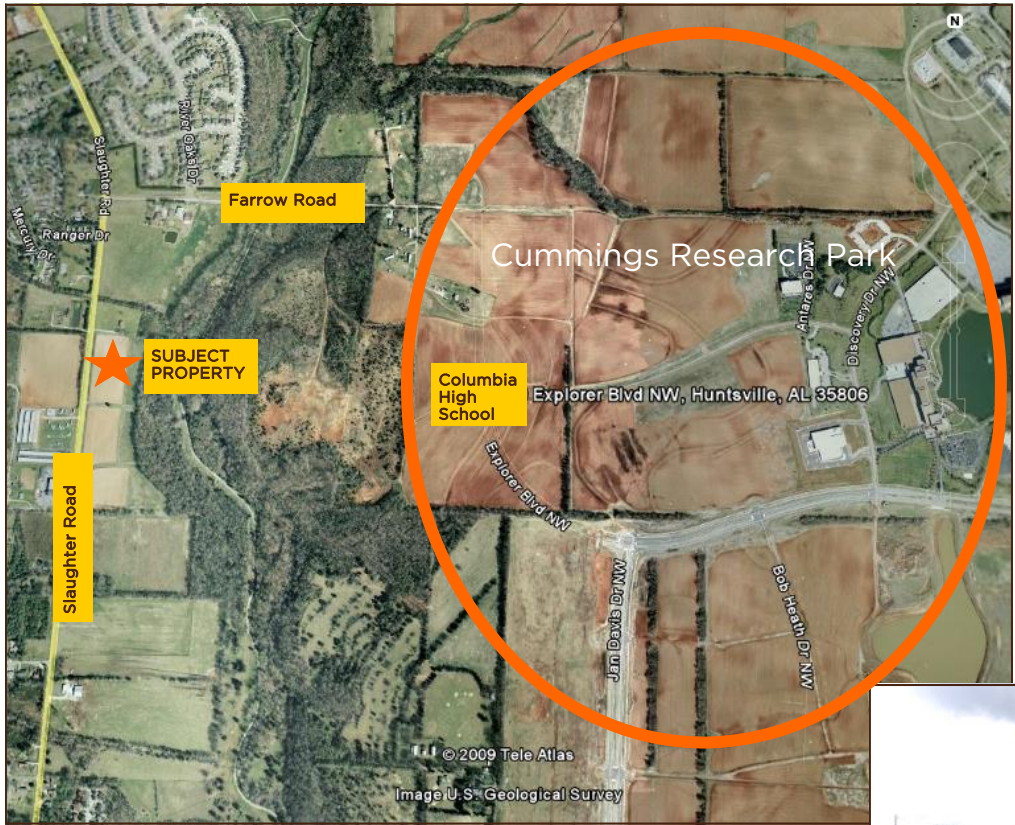




# LAND FOR SALE - SLAUGHTER ROAD, HUNTSVILLE, AL PRIME LOCATION FOR TOWN HOME DEVELOPMENT



**AVAILABLE ACREAGE**  
5.30 acres

- COMMENTS**
- 342' frontage on Slaughter Road
  - Zoned R-2A, and approved for a townhome subdivision
  - Preliminary engineering work has been completed
  - Very close proximity to Cummings Research Park and newly built Columbia High School
  - Perfectly suited for town home development

**SALES PRICE**  
\$500,000 (\$2.17 PSF)

**DEMOGRAPHICS**  
5 MILE RADIUS  
Population: 84,460  
Avg HH Income: \$70,800

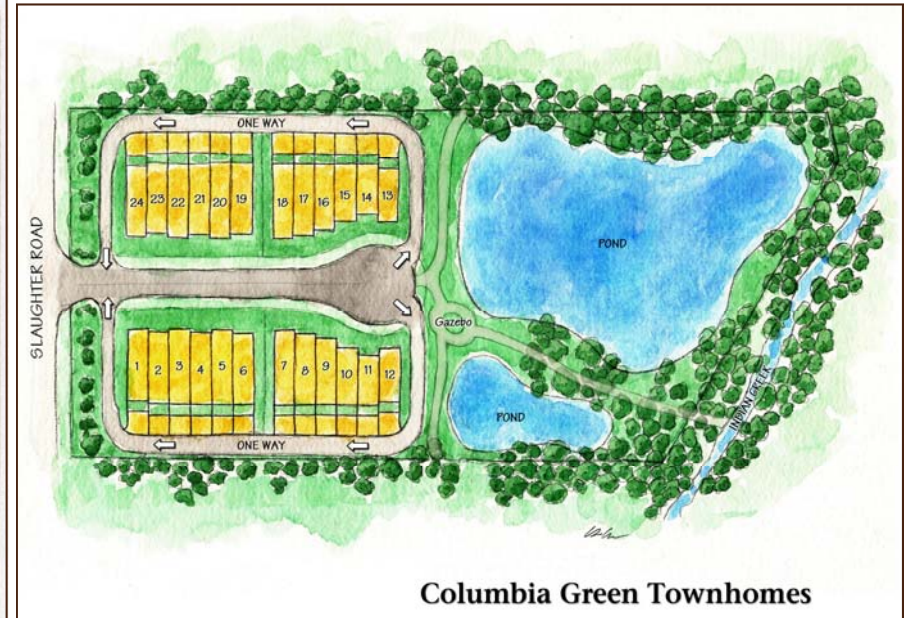
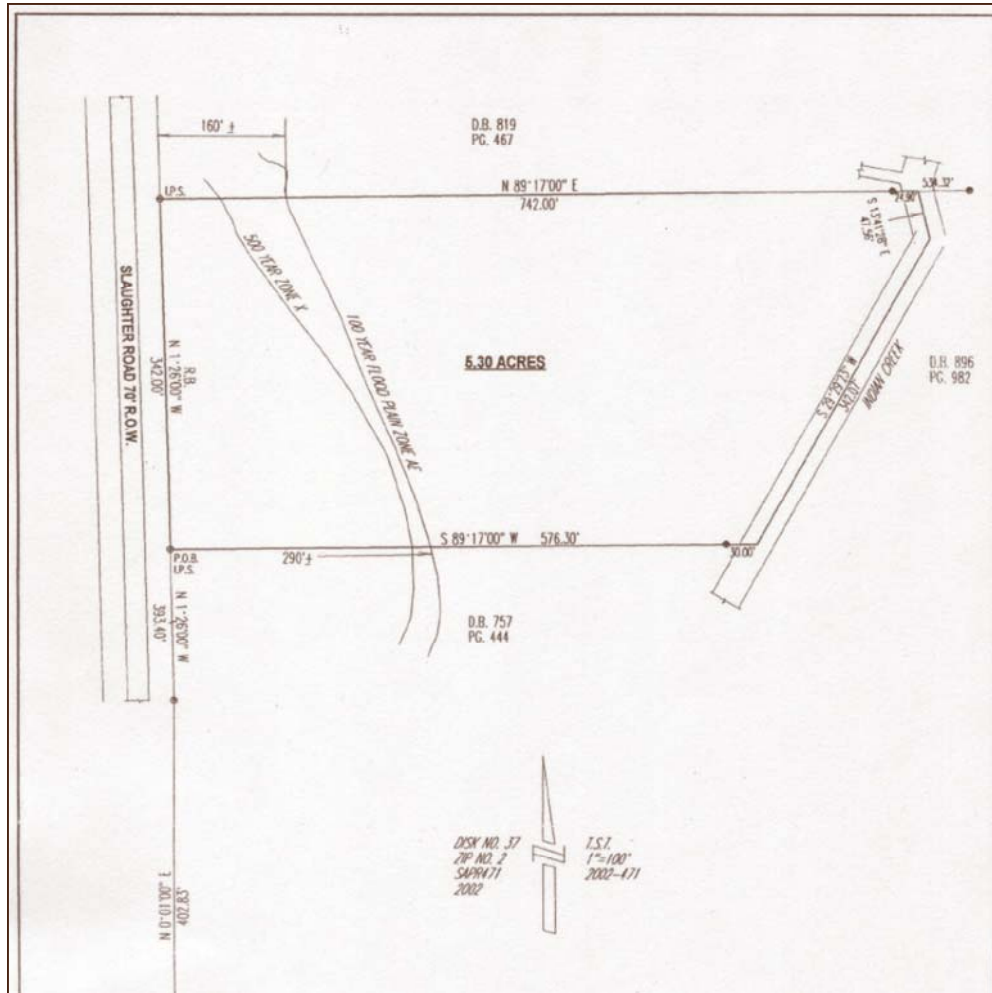


Exclusive Agents: David Garnett  
davidg@grahamcompany.com  
200 Westside Square  
Suite 800  
Huntsville, AL 35801  
Jeremy D. Pope, CCIM, SIOR  
jeremyp@grahamcompany.com

Phone: 256.382.9010  
Fax: 256.382.9011  
www.grahamcompany.com



# LAND FOR SALE - SLAUGHTER ROAD, HUNTSVILLE, AL PROPOSED DEVELOPMENT & SURVEY



Exclusive Agents: David Garnett  
davidg@grahamcompany.com

Jeremy D. Pope, CCIM, SIOR  
jeremyp@grahamcompany.com

200 Westside Square  
Suite 800  
Huntsville, AL 35801

Phone: 256.382.9010  
Fax: 256.382.9011  
www.grahamcompany.com